

CARRER 24500-xSxx 3000&4000K

H000277B
Rev. 0

FIG-1-A1

Instalación en hormigón
Concrete Installation

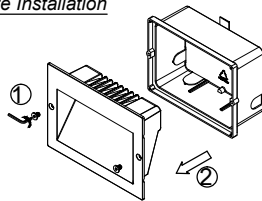


FIG-1-A2

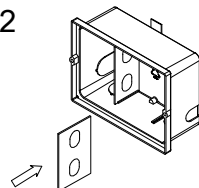


FIG-1-A3

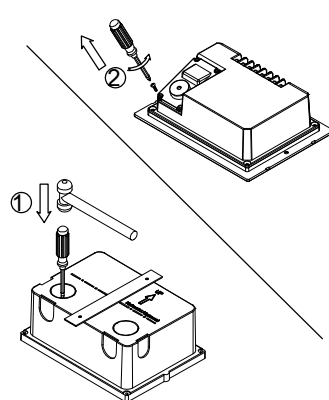
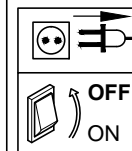
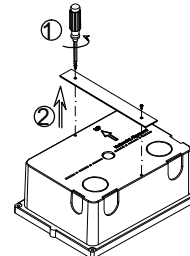
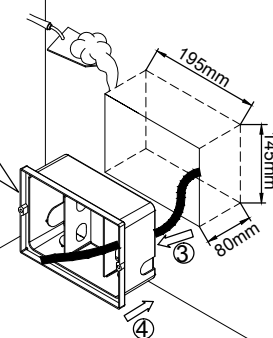
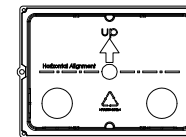


FIG-1-A4-a



Marcado "arriba" en la parte superior.
Side marked with "up" label in the top.



ES: La seguridad de la luminaria se garantiza solo cumpliendo las siguientes instrucciones; por ello, es necesario conservarlas.
EN: The safety of this luminaire is guaranteed only if you comply with these instructions; remember to conserve in a safe place.

ES: La instalación debe realizarse por personal cualificado.
EN: The installation should be carried out qualified personnel.

ES: Si se daña el cable flexible externo o cordón de esta luminaria, debe ser substituido exclusivamente por personal de Nexia o una persona con cualificación similar para evitar posibles daños.

EN: If the external flexible cable or cord of this luminaire is damaged, it shall be exclusively replaced by Nexia's personnel or a similar qualified person in order to avoid a hazard.

ES: La fuente de luz de esta luminaria no es reemplazable; Cuando la fuente de luz llegue al final de su vida útil, se reemplazará toda la luminaria.

EN: The light source of this luminaire is not replaceable; when the light source reaches its end of life the whole luminaire shall be replaced.

FIG-1-A4-b

Placa maestra
Master plate

1. Fije el cuadro de instalación en la placa.
1. Put the Installation box fix on the top of the plate.

2. Tire el hormigón y espere hasta que se seque y se solidifique. Luego retire la placa.
2. Pull over the concrete and wait until it dry out and solid then take off the plate.

3. Cortar el sobrante de las puntas.
3. Cut the sharp site.

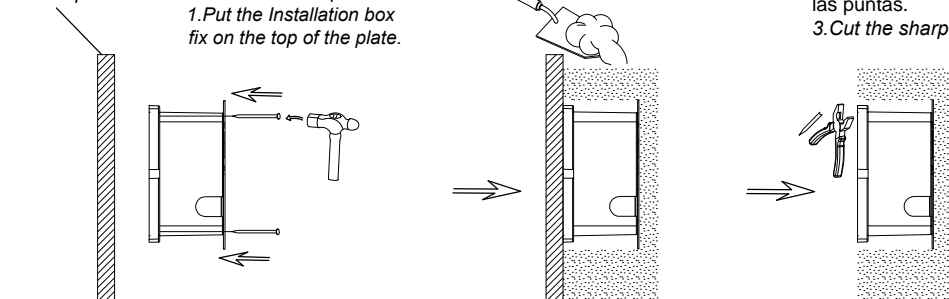
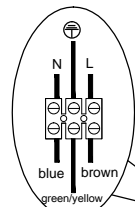


FIG-1-A5

para cable/tubería: Ø6-13mm
for cable/pipe: Ø6-13mm

H05RN-F 3x1.0-1.5mm²



Torque: 3-3.5kgf.cm

Para alcanzar la IP requerida, el cable debe ser H05RN-F 3G1.0-1.5mm², y pasarlo antes de pelar.
In order to reach the required IP, the cable must be H05RN-F 3G1.0-1.5mm², and threading through before stripping.

FIG-1-A6

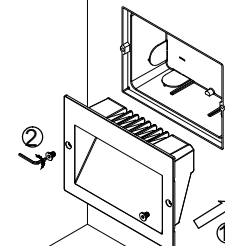


FIG-1-B1

Instalación en tablero de madera
Wood board Installation

Asegúrese de que el grosor del tablero de madera no sea inferior a 5 mm.

Make sure the thickness of the wood board no less than 5mm.

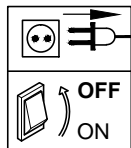
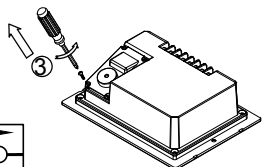
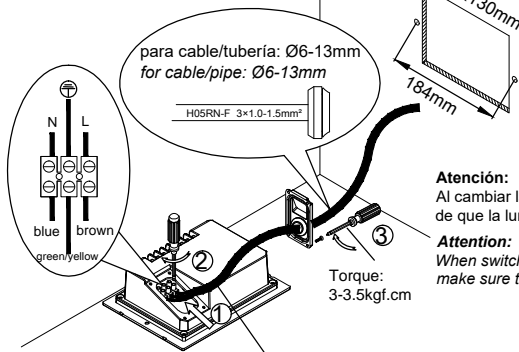


FIG-1-B2



Torque: 3-3.5kgf.cm

Atención:
Al cambiar la temp. de color, asegúrese de que la luminaria esté apagada.

Attention:
When switching the colour temp., make sure the luminaire is off.

3000K 4000K



Para alcanzar la IP requerida, el cable debe ser H05RN-F 3G1.0-1.5mm² y pasarlo antes de pelar.
In order to reach the required IP, the cable must be H05RN-F 3G1.0-1.5mm² and threading through before stripping.

FIG-1-B3

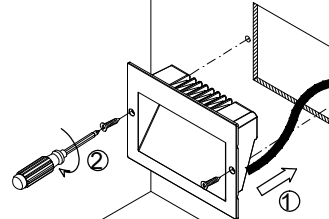
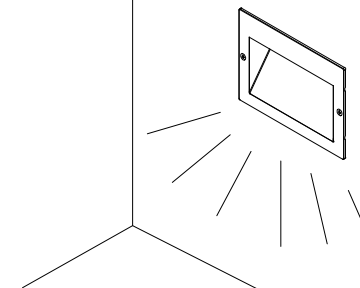


FIG-2



NEXIA

NEXIA ILUMINACIÓN S.L.
Polígono Industrial Can Carner
C/ Priorat, 14-20, 08211 Castellar del Vallès
Barcelona, SPAIN
Tel. +34 93 715 47 12
info@nexia.es www.nexia.es